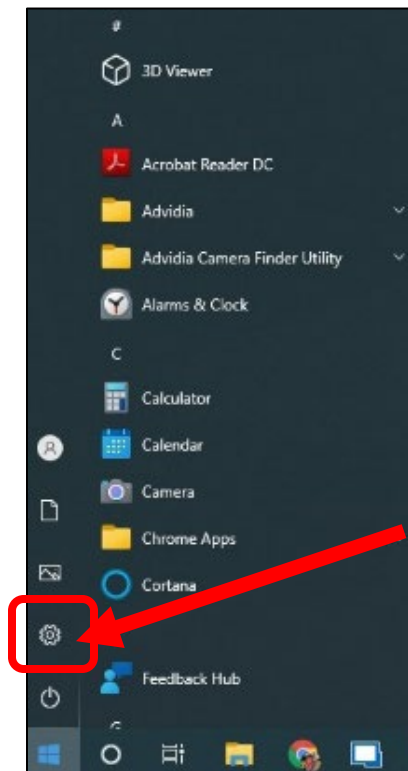
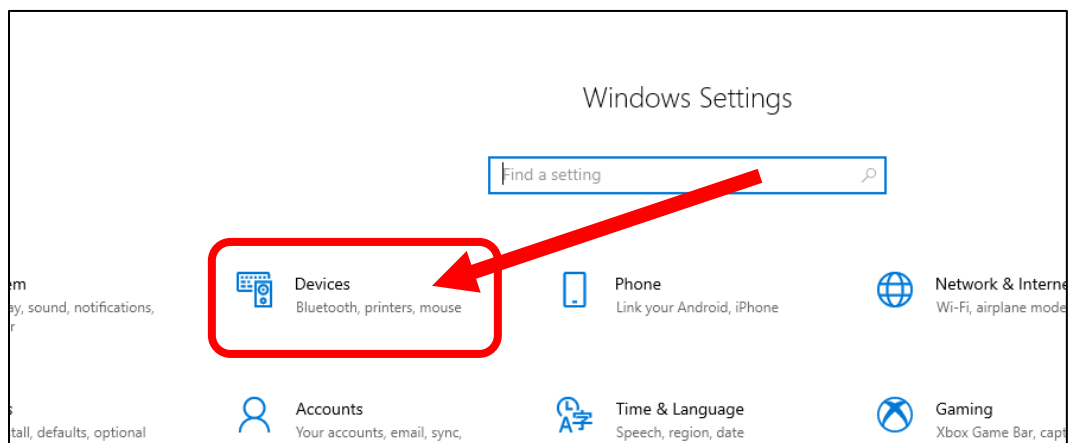


How to Add a New Printer

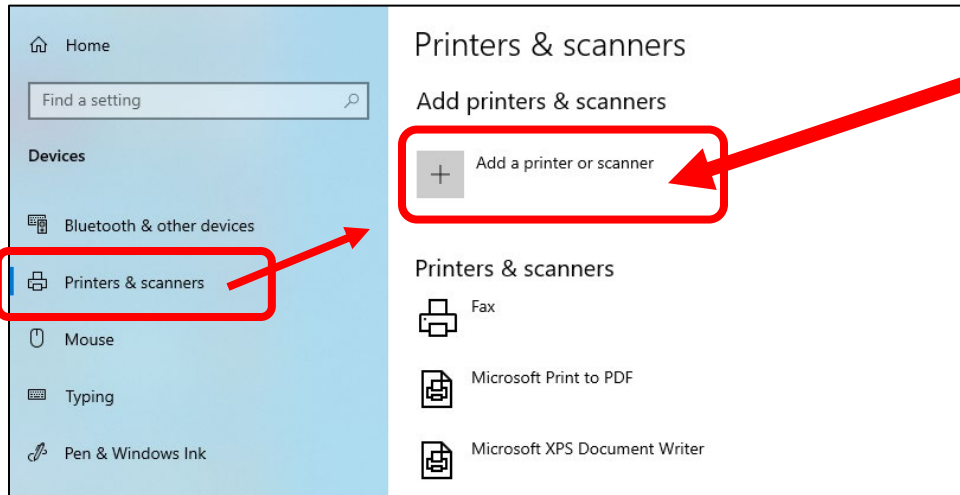
Click the **Windows** button (bottom left corner) and click on the **Settings** button



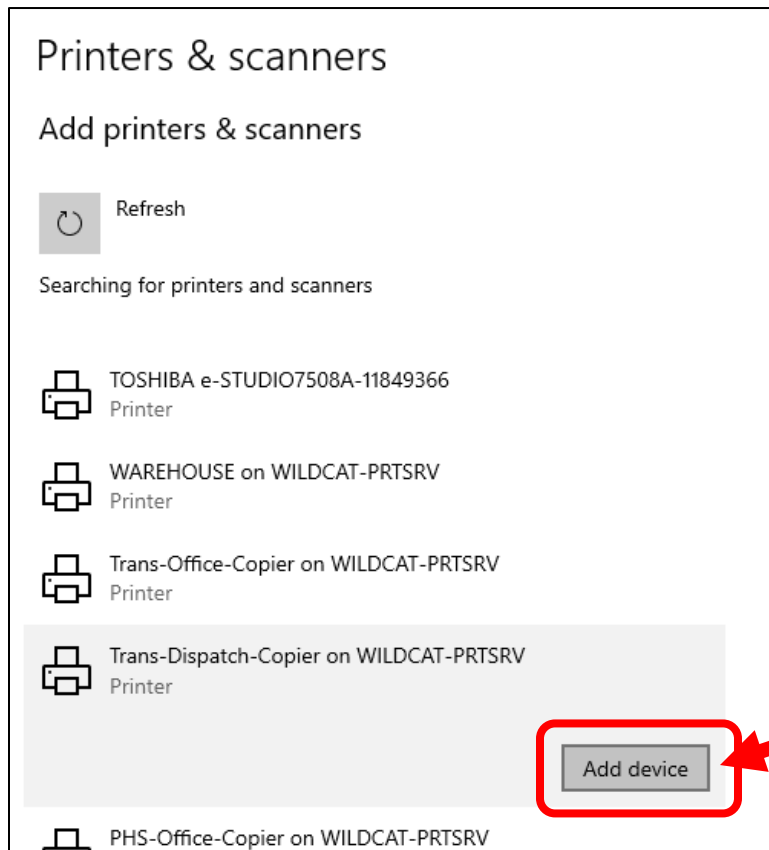
In Windows Settings, click on **Devices**



Under the Devices menu on the left, click on **Printers & Scanners** then click on **Add a Printer or Scanner**



When the list of printers available populates, select your printer and click **Add Device**



NOTE: This will be a **LONG** list of available devices and may require some searching to find a specific device. Carefully read the list, and with a little bit of patience will get you there.

As always, if you are still having trouble with this process, please email the Help Desk (helpdesk@elginisd.net). We are more than happy to come by and assist in any way possible!